

Multi Cat 1908

STANDARD



PICTURE OF SIMILAR VESSEL

GENERAL

Basic functions

Anchor handling, dredger service, supply, towing, hose handling and survey

Classification

Bureau Veritas
I * HULL • MACH
Special Service / Workboat
Coastal Area

DIMENSIONS

Length overall	19.05 m
Beam moulded	8.00 m
Depth moulded	2.75 m
Draft aft min	2.10 m
Draft aft max	2.40 m
Deck area (wooden)	35 m ²
Deck load workdeck	5 t/m ²

TANK CAPACITIES

Fuel oil	7.5 m ³
Ø Fuel oil	46.6 m ³
Fresh water	1.1 m ³
Ø Fresh water	14.8 m ³
Technical water aft	18.2 m ³
Lubrication oil	0.8 m ³
Dirty oil	0.9 m ³
Bilge water	0.8 m ³
Sewage	0.9 m ³

PERFORMANCES

Bollard pull max	13.5 t
Speed	9.0 kn

PROPULSION SYSTEM

Main engines	2x Caterpillar C18 TA/B
Total Power	894 kW @ 1800 rpm
Gearboxes	2x WAF 264L, 4.5:1
Propulsion	2x Promarin fixed pitch propellers in Optima nozzles, Ø 1350 mm

ELECTRICAL EQUIPMENT

Generator Set	1x Caterpillar C4.4 NA 47.5 kVA, 38 ekW 50 Hz, 230/400
---------------	---

DECK LAY-OUT

Anchor	2x HHP 180 kg Chain 1x 110m, 16mm stud link
Anchor winch	1x DMT 100-E16K2
Crane	1x Heila HLRM 80-3S, 5.30 ton at 12.04 m
Anchor Handling Winch	1x DMT AHW-H150kN 15 ton @ 5 m/min, BHL 20 ton

SECONDARY SHIP SYSTEMS

Bilge / transfer pump	2x Azcue-50/3B, 20 m ³ /hr
Sewage pump	1x Libellula L1-3H

ACCOMMODATION

Air conditioned wheelhouse and day-room, pantry and sanitary space. Below main deck at starboard a workshop/store is located. Optional an heated and air conditioned accommodation can be situated below main deck at portside

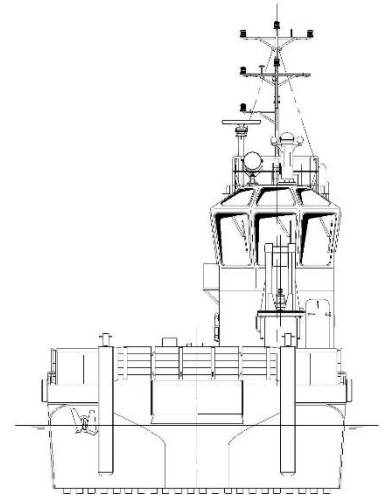
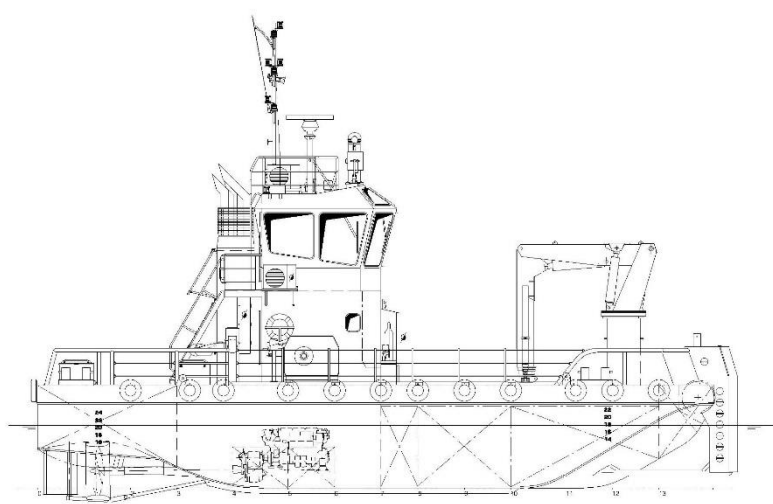
NAUTICAL AND COMMUNICATION EQUIPMENT – GMDSS A1

Searchlight	1x 500 W
Radar System	1x Furuno
Magnetic compass	1x Cassens & Plath
GPS	1x Furuno
Echo Sounder	1x Furuno
Intercom	1x Phontech
VHF	1x Sailor

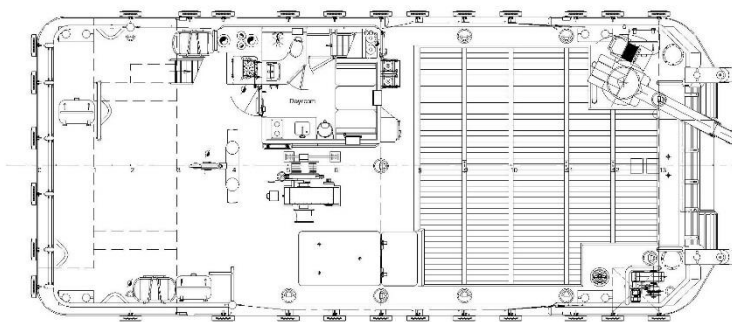
Ø = Optional equipment

Multi Cat 1908

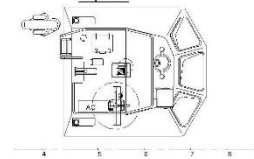
STANDARD



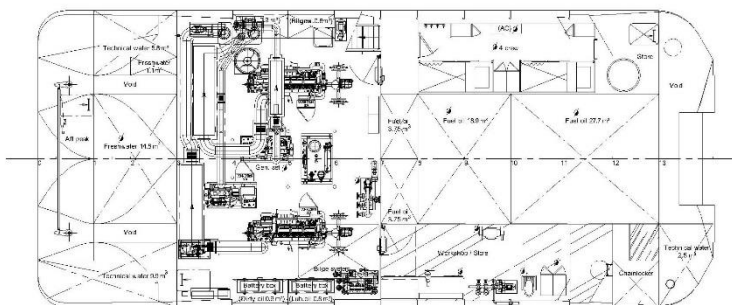
Maindeck



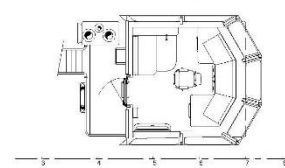
Topdeck



Below Maindeck



Bridgedeck



DAMEN

Damen.com

© No part of the leaflet may be reproduced in any form, by print, photoprint, microfilm, or any other means, without written permission from Damen Shipyards Group